

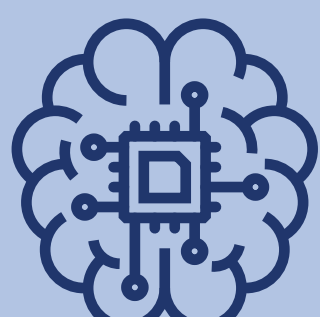
# Selecting the Right Data Architecture and Platforms to Support AI

Accelerate Your AI Initiatives With HPE and Converge Technology Solutions

## Introduction

AI helps businesses drive innovation faster and boost operational efficiency by unlocking hidden insights from data, unearthing new pathways for productivity and growth with the power and potential to revolutionize how we do business. Enterprises are starting to ramp up adoption of AI technologies — such as machine learning (ML), natural language processing (NLP), robotic process automation (RPA), and more — but many don't know how or where to get started.

Keep reading to discover how Converge Technology Solutions works closely with Hewlett Packard Enterprise to help simplify your AI projects with top-notch support and services while helping you choose the right AI solution, in addition to troubleshooting along the way.



## Choosing the Right Platforms to Support AI

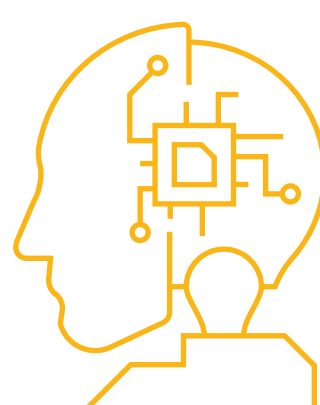
Choosing the right platform and partner is critically important to the success of your AI initiative. Below are some of HPE's leading AI solutions that Converge Technology Solutions can help implement in your organization.

### 1

## HPE Machine Learning Data Management Software

Empower data engineering teams to automate pipelines with a unique architecture that is cost-effective at scale and enables sophisticated transformations with any type of data. With HPE Machine Learning Data Management Software, you can:

- ✓ **Reduce costs and time to results** with automatic intelligent "diffbased" data processing, data deduplication, and dynamic scalability.
- ✓ **Enable reproducibility and compliance** via immutable data lineage and data versioning of different data types and logic: input data, data processing logic, output results, metadata, and models.
- ✓ **Increase team efficiency and collaboration** via a Git-like structure of commits, branches, and rollbacks.



### 2

## HPE Machine Learning Development Environment

Uncover hidden insights from your data by helping engineers and data scientists collaborate, build more accurate ML models, and train them faster. With the HPE Machine Learning Development Environment, you can:



- ✓ **Train at any scale** and take advantage of distributed training without changing your model code, with software that manages the provisioning of machines, accelerators, networking, data loading, and fault tolerance to make distributed model training fast and easy.
- ✓ **Automatically find high-quality models** and build more accurately (and faster) with scalable hyperparameter search. State-of-the-art tuning algorithms and hyperparameter search visualizations reduce the time and cost needed to find better models.
- ✓ **Analyze your results** and easily interpret your experiment results, reproduce experiments with artifact tracking, and deploy your model using the HPE Machine Learning Development Environment's built-in model registry.
- ✓ **Share cluster resources** on-premises or cloud GPUs with your team. Cluster scheduling offers first-class support for ML and seamless spot instance support.

### 3

## HPE Ezmeral Unified Analytics Software

Unlock data and insights faster from edge to cloud by helping IT teams develop and deploy data, analytics, and AI. With HPE Ezmeral Unified Analytics Software, you can:

- ✓ **Simplify data management** through the integrated data fabric that provides access to all data types and multiple formats (files, objects, and streams) while federating the data into a single global data plane, making it easy to generate business insights faster.
- ✓ **Maximize productivity** with seamless access to data and an extensible open-source environment that reduces IT bottlenecks, giving developers self-service access to the evergreen tools they need to deliver across hybrid environments.
- ✓ **Ensure data security** with end-to-end, enterprise-grade security features, including zero-trust authentication, single sign-on, app-level isolation, observability, monitoring, metrics, customizable alerts, and more.
- ✓ **Boost innovation** with fine-grained controls to place data and compute across environments, assuring enterprises that data is compliant with industry and government regulations for sovereignty, privacy, and locality.



### 4

## HPE GreenLake Edge-to-Cloud Platform

The HPE GreenLake edge-to-cloud platform helps make AI work for you by providing supercomputing access to power AI at scale. With HPE GreenLake, you can:



- ✓ **Solve for operational risk and data gravity issues**, avoiding the compliance, security, and data gravity issues of public cloud and the operational risk of running the infrastructure yourself.
- ✓ **Empower data scientists and accelerate time to value** with a Kubernetes-based modern extensible data science framework that helps data scientists focus on building models, not managing and configuring infrastructure.
- ✓ **Enjoy elastic pricing and cost monitoring** to tie usage to specific business objectives. Reserve the capacity you need while only paying for the resources you consume.
- ✓ **Get secure provisioning and management** by offloading monitoring and management of your data science environment.

## Conclusion

While technology is a powerful tool, it is only one aspect of the solution. For AI to be truly effective, organizations need to get **people, processes, experiences, and analytics in alignment**. Converge Technology Solutions works with you, as an extension of your team, to create an environment that encourages continuous learning and adaptation, fosters collaboration, and values humans just as much as technology.

Contact a Converge Technology Solutions representative today to learn more.

## About Converge Technology Solutions

Converge Technology Solutions Corp. is a software-enabled IT and cloud solutions provider focused on delivering industry-leading solutions and services. Converge's regional sales and services organizations deliver advanced analytics, cloud, cybersecurity, and managed services offerings to clients across various industries. Converge supports these solutions with talent expertise and digital infrastructure offerings across all major IT vendors in the marketplace. This multi-faceted approach enables Converge to address the unique business and technology requirements for all clients in the public and private sectors. Our goal is to provide a trusted partner that brings together world-class solutions and services to help reduce costs, increase efficiency, and create competitive advantages.

Converge US Headquarters | 130 Technology Parkway | Norcross, GA 30092  
[info@convergetp.com](mailto:info@convergetp.com) | [convergetp.com](http://convergetp.com)



The information contained herein is subject to change without notice. The only warranties for Hewlett Packard Enterprise products and services are set forth in the express warranty statements accompanying such products and services. Nothing herein should be construed as constituting an additional warranty. Hewlett Packard Enterprise shall not be liable for technical or editorial errors or omissions contained herein.

© 2023 Converge Technology Solutions. All rights reserved.