

# Simplify Your AI Journey and Accelerate Innovation

## Gain More Value From Your Data With HPE and Converge Technology Solutions

Artificial intelligence (AI) implementations are on the rise across industries, with the power and potential to generate incredible business value, boost innovation, and speed digital transformation. However, enterprises today face numerous challenges in executing a successful AI strategy.

This white paper will discuss how Converge Technology Solutions, a Hewlett Packard Enterprise Platinum Solution Provider, can help you overcome these challenges to simplify your AI projects and support increasingly complex workloads with the most beneficial HPE AI solutions and the talent/expertise to implement them.

### AI in the Modern Enterprise

Enterprises today operate in hybrid cloud environments, with data distributed among data centers, business edges, and public clouds, making analytics from edge to cloud a necessity. As analytics become the driving force for business innovation, many companies are ramping up adoption of AI technology to identify key patterns and insights in order to make predictions based on endless streams of data.

Benefits of AI for the modern enterprise include:

- ✓ Efficiency and productivity gains
- ✓ More informed decision-making
- ✓ New and/or improved capabilities
- ✓ Business model expansion
- ✓ Accelerated speed of business
- ✓ More personalized customer experiences and support
- ✓ Improved monitoring
- ✓ Enhanced services
- ✓ Better service quality
- ✓ Fewer human errors
- ✓ Increased innovation and profitability



**50% of organizations** polled have adopted AI in at least one business unit as of 2022 — a 2.5x increase from 2017.<sup>1</sup>

Despite AI's groundbreaking capabilities, enterprises often find it difficult to harness the emerging technology, leaving them searching for answers. *Where do we get started? How do we optimize our IT environment to handle increasingly demanding AI workloads? How do we derive valuable insights and outcomes from our data?*

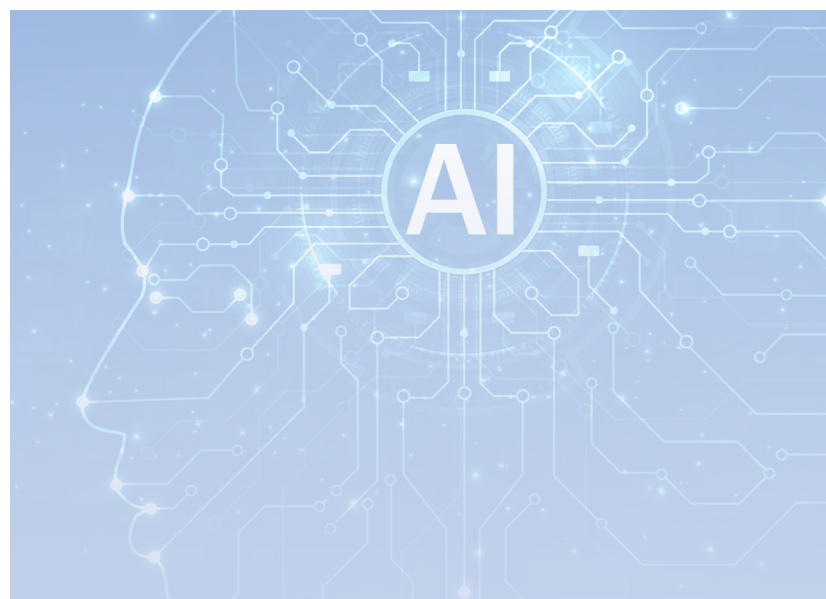
### Common Challenges Preventing Successful AI Deployment

Many enterprises today lack the infrastructure agility, flexibility, and resilience that is mandatory for AI, as well as the budget to pursue rapid innovation. Without the right infrastructure, enterprises are unable to meet the demands of AI and analytics, which leads to unreliable data access, increased time to production for AI models, and slower, more limited outcomes.

---

An apparent shortage of tech talent shows no sign of easing either. When polled by McKinsey & Co in 2022, most organizations reported that hiring for each AI-related role has been difficult in the past year and has become more difficult over the past three years. AI data scientists remain particularly scarce, with 78% of respondents citing that as a role that they have struggled to fill.<sup>1</sup>

To help you execute a successful AI strategy and really take advantage of the power AI holds, Converge Technology Solutions works closely with HPE to deliver the following AI solutions and services.



### Other common AI challenges include:



Handling vast amounts of data on outdated infrastructure



Deriving actionable insights from increasingly complex workloads, apps, and data



Processing data and running AI algorithms at the edge for real-time decision-making



Ensuring data security and compliance with industry regulations



Accelerating and scaling AI projects



Cost requirements



Limited access to AI expertise, talent, skills, and/or resources

# Overcome AI Challenges With HPE AI Products and Converge AI Services

#1

## HPE Machine Learning Development Environment

The HPE Machine Learning Development Environment helps data scientists focus on innovation by reducing the complexity and cost associated with machine learning (ML) model development. Using a comprehensive array of features integrated into an easy-to-use, high-performance ML environment, ML engineers can focus on building better models, instead of managing IT infrastructure.



**Train models faster:** Allow ML engineers to train models faster and take advantage of distributed training without changing their model code. This gives teams the ability to train at any scale by managing the provisioning of machines, networking, data loading, and fault tolerance, making distributed model training fast and easy.



**Remove complexity and cost:** Enable ML model developers to accelerate time to value by making it easier for IT admins to set up, manage, secure, and share AI compute clusters. Developers get more from their GPUs with smart scheduling and reduce cloud GPU costs by seamlessly using spot instances.



**Enhance data science collaboration:** Enable easier and faster ML team collaboration through features like simpler model reproducibility and experiment tracking. As a result, teams are able to easily interpret experiment results and reproduce experiments.

#2

## HPE Ezmeral Unified Analytics Software

HPE Ezmeral Software enables enterprises to develop and deploy data, analytics, and AI seamlessly across hybrid cloud environments. This offering enables customers to unlock data and insights faster with a consistent SaaS experience that provides access to secure, enterprise-grade versions of the most popular open-source frameworks.



**Maximize productivity:** Seamless access to data and extensible open-source environments eliminate IT bottlenecks, giving developers consistent, self-service access to the evergreen tools they need to deliver across hybrid environments.



**Innovate everywhere with confidence:** Deploy AI and advanced analytics where your enterprise requires them to break down barriers and meet regulatory, compliance, and performance needs.



**Predictable, transparent economics:** SaaS delivery provides predictable, transparent economics and precise controls to optimize cost and utilization across environments.

**#3**

### HPE Machine Learning Data Management Software

HPE Machine Learning Data Management Software empowers data engineering teams to automate complex pipelines. The unique architecture is cost-effective at scale and enables sophisticated data transformations across any type of data.



#### Improve reproducibility for auditing and compliance needs:

Automatic, immutable data lineage and data versioning ensure complete reproducibility of any outcome. Get full versioning for data and metadata, including all analysis, parameters, artifacts, models, and intermediate results.



#### Enhance scalability to process petabytes of data:

Run complex data pipelines with sophisticated data transformations by leveraging dynamic autoscaling and parallelization without rewriting your code. Reduce data processing time from weeks to hours.



#### Get the flexibility to use any data type, any code, on any platform:

Use any language, libraries, or frameworks with any structured or unstructured data on any platform, either on-premises or in the cloud. Use batch and streaming data so that your ML models are constantly refreshed.

**#4**

### HPE GreenLake for ML Ops

The HPE GreenLake edge-to-cloud platform for ML Ops makes it easier and faster to get started with AI projects and seamlessly scale them to production deployments. Offering consumption-based pricing, HPE GreenLake allows you to consume AI resources on-premises with a cloud experience.



#### Solve for operational risk and data gravity issues:

Avoid the compliance, security, and data gravity issues of public cloud and the operational risk of running the infrastructure yourself. Workloads run right next to your on-premises data lake, letting you avoid hidden costs for data egress. Let HPE take on the burden of keeping your AI/ML platform up to date with the latest software versions and fixes across the entire stack.



#### Empower data scientists and accelerate time to value:

This Kubernetes-based modern extensible data science framework empowers data scientists to bring tooling and define workflows to build out data science algorithms across any data science use case.



#### Secure provisioning and management:

Offload monitoring and management of your Data Science environment. With HPE GreenLake for ML Ops, your environment is securely managed from HPE IT Operations Centers, and through HPE GreenLake Central.

## Conclusion

Converge Technology Solutions works closely with our customers and HPE to determine the most beneficial AI solution for your business — and with data scientists on staff, we then provide the talent and expertise to implement that solution. Each initiative starts with an assessment to understand a customer’s unique challenges and needs. The Converge team then helps to properly implement the AI solution and environment, in addition to troubleshooting along the way.

At a time when AI and data science skill sets are in short supply, this AI ecosystem saves organizations time and money, while delivering value to the business.



**Contact a Converge Technology Solutions representative today to learn more about executing a successful AI strategy and unlocking more value from your data.**

## About Converge Technology Solutions

Converge Technology Solutions Corp. is a software-enabled IT and cloud solutions provider focused on delivering industry-leading solutions and services. Converge’s regional sales and services organizations deliver advanced analytics, cloud, cybersecurity, and managed services offerings to clients across various industries. Converge supports these solutions with talent expertise and digital infrastructure offerings across all major IT vendors in the marketplace. This multi-faceted approach enables Converge to address the unique business and technology requirements for all clients in the public and private sectors. Our goal is to provide a trusted partner that brings together world-class solutions and services to help reduce costs, increase efficiency, and create competitive advantages.

**Converge US Headquarters | 130 Technology Parkway | Norcross, GA 30092**  
**[info@convergetp.com](mailto:info@convergetp.com) | [convergetp.com](http://convergetp.com)**



HPE Platinum Solution Provider for:

- Switching Specialist
- Wireless LAN Specialist

<sup>1</sup>McKinsey & Co, “The State of AI in 2022 Survey,” December 2022.

The information contained herein is subject to change without notice. The only warranties for Hewlett Packard Enterprise products and services are set forth in the express warranty statements accompanying such products and services. Nothing herein should be construed as constituting an additional warranty. Hewlett Packard Enterprise shall not be liable for technical or editorial errors or omissions contained herein.